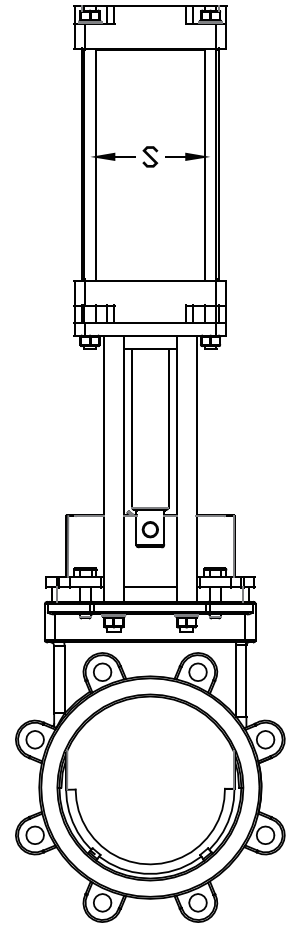
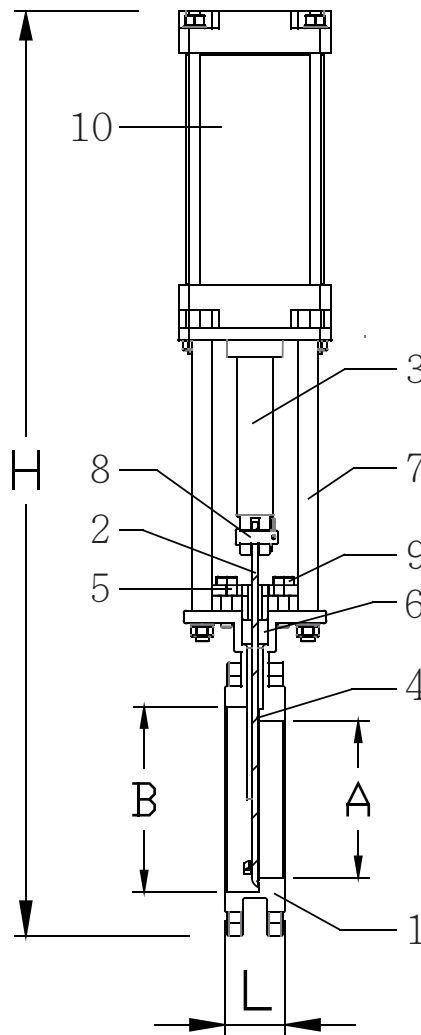
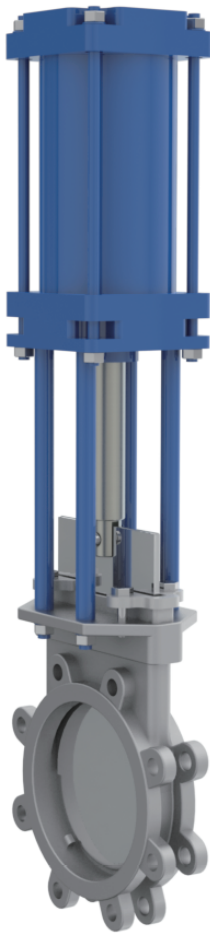


## 氣動式不鏽鋼閘刀閥

## PNEUMATIC TYPE STAINLESS KNIFE GATE VALVE



### DIMENSION: MM

SIZE	L	A	B	S	H
2"	48	42	64	63	520
2-1/2"	51	57	80	63	570
3"	51	72	95	80	630
4"	51	97	122	80	690
5"	57	125	148	125	870
6"	57	144	166	125	890
8"	70	195	222	150	1100
10"	70	245	272	180	1500
12"	76	306	306	200	1600
14"	76	330	375	250	1860
16"	89	375	430	250	2070
18"	89	430	475	250	2200
20"	114	475	520	300	2400
24"	114	570	630	300	2750

(FOR REFERENCE ONLY.)

### MATERIALS

NO.	SUBJECT	MATERIAL
1	BODY	SUS304 SUS316
2	PLATE	SUS304 SUS316
3	STEM	SS41+HCr
4	SEAT	TRFLON
5	GLAND	SUS304 SUS316
6	GLAND PACKING	ASB NON-ASB
7	YOKE	DUCTILE IRON
8	CONNECTOR	SUS304 SUS316
9	BOLT	SUS304 SUS316
10	ACTUATOR	AIALLOY .FC

(FOR REFERENCE ONLY.)

### 連接規格 : (FLANGE)

- JIS 5K JIS 10K JIS7.5K
- ANSI 150LB
- DIN PN10 PN6

### MSS-SP81 TEST STANDARD

BODY TEST : 11kg / cm<sup>2</sup> (WATER)

SEAT TEST : 2.8kg / cm<sup>2</sup> (WATER)

LEAKAGE : 4 cc / per in.min.

☎ 03-4750919      ☎ 03-4750759

✉ valve.ks@gmail.com

🌐 www.valveks.com

📄 統一編號: 89712018

📍 桃園市楊梅區楊湖路一段676巷109號