

夾式彈簧型逆止閥

WAFER TYPE CHECK VALVE

夾式止回閥流量表

SIZE	水流量T/H		蒸氣流量30m/s)kg/h	
	1m/s	3m/s	6kgf/cm ²	10kgf/cm ²
15A	0.636	1.908	68.7278	105.8718
20A	1.368	4.104	147.8296	227.7242
25A	1.767	5.299	190.9465	294.1437
32A	3.462	10.386	374.1125	576.3020
40A	4.298	12.895	464.4528	715.4668
50A	6.511	19.533	703.5952	1083.8539
65A	10.863	32.589	1173.8833	1808.3098
80A	14.246	42.736	1539.4589	2371.4611
100A	22.385	67.154	2418.9799	3726.3201
125A	40.694	122.08	4397.4970	6774.1287
150A	51.504	154.51	5565.6530	8573.6159
200A	81.671	245.01	8825.5757	13595.367

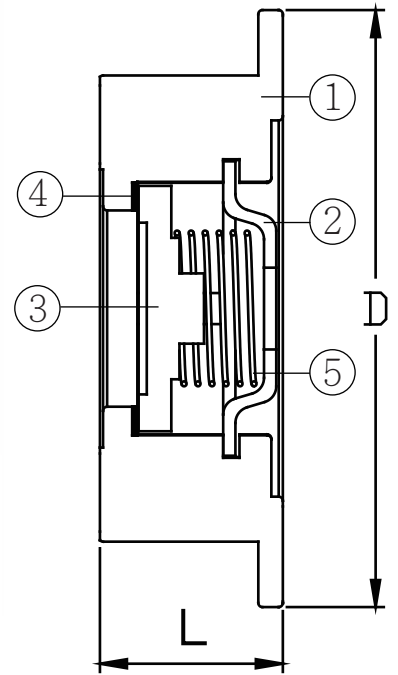
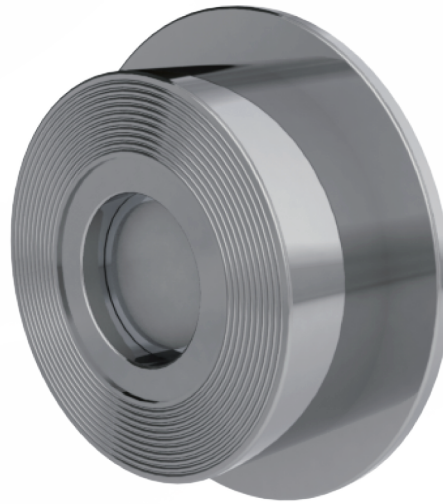
(FOR REFERENCE ONLY.)

最高使用壓力 : 16kg/cm²

最高使用溫度 : 250 °C

最低動作壓力 : 0.05kg/cm²

(FOR REFERENCE ONLY.)



PARTS LIST

ITEM NO	PART NAME	MATERIAL
1	BODY	CF8 CF8M
2	COVER	CF8 CF8M
3	DISC	CF8 CF8M
4	SEAT	CF8 CF8M
5	SPRING	SUS316

(FOR REFERENCE ONLY.)

DIMENSIONS

mm in	1/2"	3/4"	1"	1-1/4"	1-1/2"	2"	2-1/2"	3"	4"	5"	6"	8"
L	16	23	23	33	33	42.5	46	50	60	90	106	140
D	54	63	73	84	88	106	123	134	158	192	215	266

(FOR REFERENCE ONLY.)